

INFORME DIARIO 16-JUN-20

NEGOCIACIÓN DE CEDEAR*

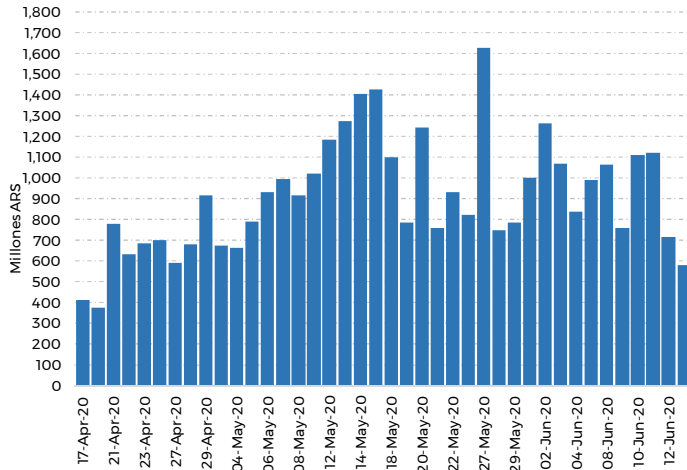
| Empresa | Código | Ratio ¹ | Última Negociación | Volumen (MILL) ² | | Cierre (T+2) | | Variaciones ³ | | | Volatilidad 40Ruedas ⁴ |
|-------------------------------|--------|--------------------|-----------------------|-----------------------------|---------------------|--------------|-----------|--------------------------|---------|---------|--------------------------------------|
| | | | | Última Rueda | Últimas 40Ruedas | Moneda | Valor | Diaria | m/m | YTD | |
| MERCADOLIBRE INC | MELI | 0.500 | 16-Jun-20 | 66.7 | 2263.1 | ARS | 52,992.00 | 5.72% | 12.51% | 144.76% | 66.81% |
| APPLE INC | AAPL | 0.100 | 16-Jun-20 | 39.7 | 2112.1 | ARS | 3,925.00 | 2.56% | 5.50% | 82.63% | 38.79% |
| BANCO BRADESCO S.A | BBD | 1.000 | 16-Jun-20 | 39.5 | 1200.8 | ARS | 473.00 | -2.27% | 30.66% | -28.02% | 90.27% |
| PETROBRAS | PBR | 2.000 | 16-Jun-20 | 35.7 | 2171.3 | ARS | 952.00 | 1.38% | 25.76% | -19.93% | 82.35% |
| BARRICK GOLD CORP. | COLD | 1.000 | 16-Jun-20 | 34.1 | 2782.2 | ARS | 2,717.50 | -0.26% | -20.35% | 97.78% | 62.56% |
| MICROSOFT CORP. | MSFT | 0.200 | 16-Jun-20 | 24.3 | 1626.7 | ARS | 4,330.50 | 2.06% | -2.42% | 85.44% | 39.77% |
| WELLS FARGO AND CO. | WFC | 0.200 | 16-Jun-20 | 21.1 | 742.0 | ARS | 637.50 | 2.08% | 11.35% | -19.90% | 73.63% |
| CITIGROUP | C | 0.333 | 16-Jun-20 | 18.7 | 498.5 | ARS | 2,024.00 | 3.79% | 20.73% | 3.34% | 79.38% |
| THE COCA COLA COMPANY | KO | 0.200 | 16-Jun-20 | 16.2 | 851.2 | ARS | 1,046.50 | 1.60% | 0.72% | 29.35% | 46.85% |
| ALIBABA GROUP HOLDING LIMITED | BABA | 0.111 | 16-Jun-20 | 15.2 | 861.7 | ARS | 2,761.00 | 2.56% | 0.00% | 57.10% | 56.39% |
| THE WALT DISNEY COMPANY | DISN | 0.250 | 16-Jun-20 | 14.5 | 832.7 | ARS | 3,291.50 | 0.97% | -0.42% | 24.68% | 51.71% |
| J. P. MORGAN CHASE AND CO. | JPM | 0.200 | 16-Jun-20 | 14.1 | 431.2 | ARS | 2,397.00 | 4.22% | 15.30% | 19.63% | 55.74% |
| PFIZER INC | PFE | 0.500 | 16-Jun-20 | 12.9 | 426.0 | ARS | 1,867.00 | -3.64% | -20.01% | 29.11% | 56.00% |
| THE BOEING COMPANY | BA | 0.333 | 16-Jun-20 | 12.7 | 681.1 | ARS | 7,344.00 | 2.87% | 51.00% | -8.79% | 102.76% |
| WAL-MART STORES INC | WMT | 0.333 | 16-Jun-20 | 11.9 | 981.0 | ARS | 4,460.00 | -1.01% | -12.39% | 54.89% | 45.02% |
| GLOBANT S.A | GLNT | 0.500 | 16-Jun-20 | 9.9 | 473.7 | ARS | 8,063.00 | 3.15% | 8.77% | 106.74% | 69.37% |
| EXXON MOBIL CORP. | XOM | 0.111 | 16-Jun-20 | 9.5 | 868.1 | ARS | 1,083.00 | 2.17% | 5.76% | 5.04% | 62.15% |
| AMAZON.COM INC | AMZN | 0.014 | 16-Jun-20 | 9.4 | 1082.2 | ARS | 4,040.50 | -0.60% | -0.57% | 117.06% | 46.24% |
| COMPANHIA VALE DO RIO DOCE | VALE | 0.500 | 16-Jun-20 | 7.5 | 415.9 | ARS | 594.50 | 0.68% | 17.72% | 22.20% | 49.94% |
| ALPHABET INC | GOOGL | 0.034 | 16-Jun-20 | 7.5 | 751.3 | ARS | 5,569.00 | 2.00% | -2.30% | 62.53% | 40.40% |
| TESLA INC | TSLA | 0.067 | 16-Jun-20 | 7.2 | 378.3 | ARS | 7,327.50 | 4.80% | 13.60% | 248.93% | 69.39% |
| GENERAL ELECTRIC COMPANY | GE | 1.000 | 16-Jun-20 | 4.7 | 384.9 | ARS | 838.00 | 3.27% | 26.11% | 3.73% | 82.01% |
| YAMANA GOLD INC | ALY | 1.000 | 16-Jun-20 | 2.7 | 471.3 | ARS | 540.00 | -1.37% | -16.86% | 89.47% | 65.76% |
| VISA INC | V | 0.167 | 16-Jun-20 | 2.5 | 427.8 | ARS | 3,578.00 | 1.46% | -4.47% | 54.35% | 48.22% |
| MCDONALDS CORPORATION | MCD | 0.250 | 16-Jun-20 | 1.1 | 472.2 | ARS | 5,290.00 | 1.53% | 1.13% | 47.05% | 47.62% |

(*) Se consideran los 25 CEDEAR más negociados, de aquellos que registraron operaciones en plazo estándar (T+2), en el día y en al menos el 50% de las últimas 40 ruedas.

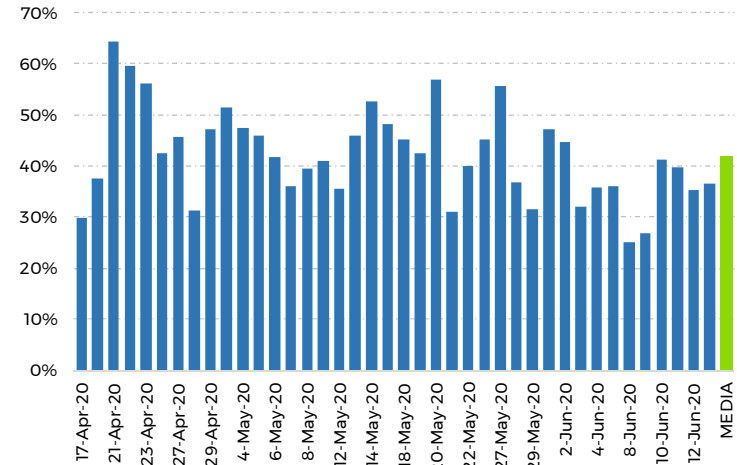
Notas:

- (1) Cantidad de acciones subyacentes por Cedear
- (2) Los volúmenes en USD se convierten a pesos utilizando el tipo de cambio bancos mayorista vendedor del día
- (3) Id: respecto del día previo o la última fecha negociada - m/m: mismo día del mes previo o fecha inmediata anterior - YTD: desde el último día del año previo o la fecha inmediata anterior
- (4) Volatilidad de las últimas 40 ruedas anualizada
- (5) Volumen efectivo últimas 20 ruedas. En el caso de especies de Cedear negociadas en USD, los volúmenes se convierten a pesos utilizando el tipo de cambio bancos mayorista vendedor del día

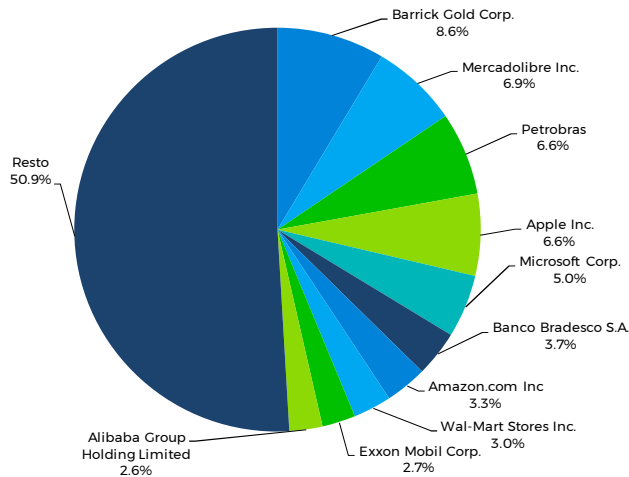
Volumen Cedear (Mill. ARS)*



Volumen CEDEAR / (Volumen CEDEAR + Acciones)*



Participación de Mercado*



Principales variaciones del día, T+2**

